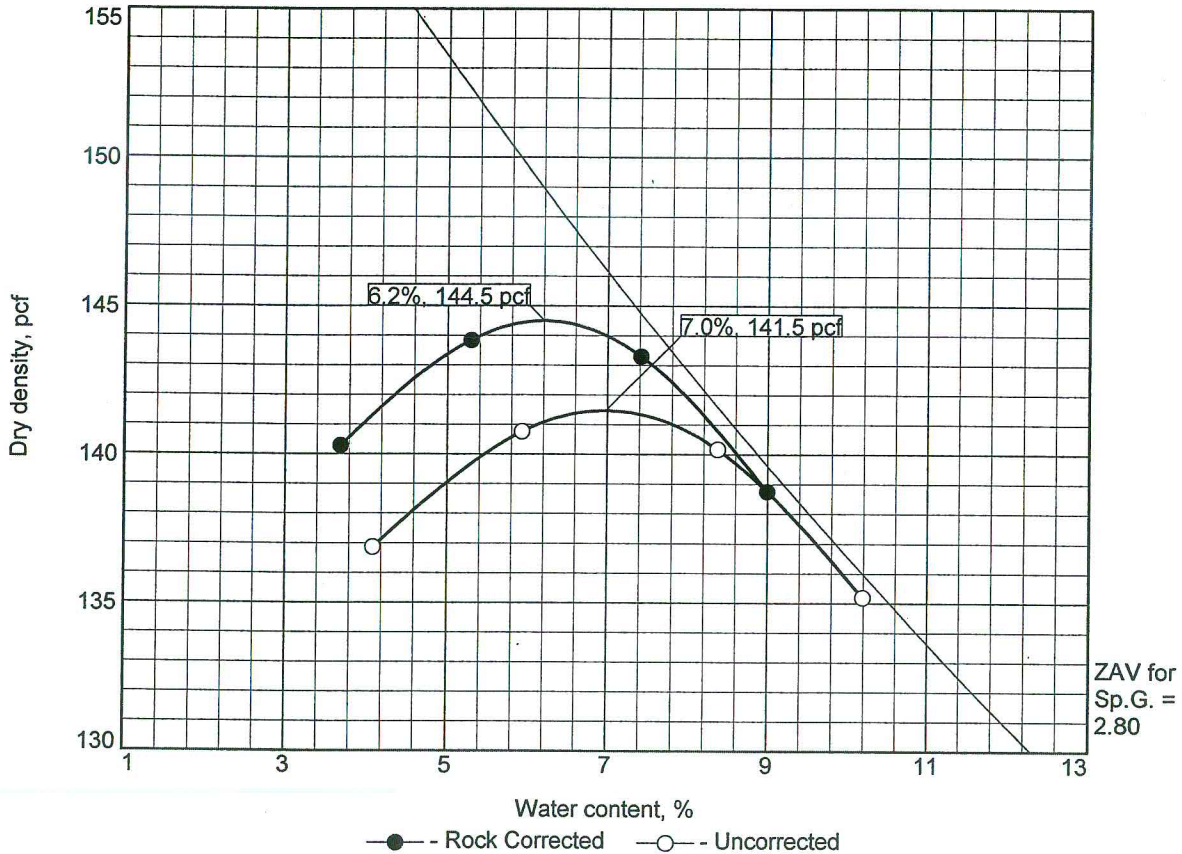






WBE certified company

## COMPACTION TEST REPORT



Test specification: ASTM D 1557-12 Method C Modified  
 ASTM D 4718-87 Oversize Corr. Applied to Each Test Point

Elev/ Depth	Classification		Received Moist.	Sp.G.	LL	PL	PI	% > 3/4 in.
	USCS	AASHTO						
---		---	---	2.7	---	---	---	13

ROCK CORRECTED TEST RESULTS	MATERIAL DESCRIPTION
Maximum dry density = 144.5 pcf Optimum moisture = 6.2 %	Crusher Run
<b>Report No.:</b> ST3606SL-01-04-15 <b>Client:</b> Smith Sand and Gravel <b>Project:</b> Laboratory Services <b>Sample No.:</b> ST3606S01 <b>Source of Sample:</b> Marcellus <b>Location:</b> Stockpile <b>Date:</b> 04-25-15 <b>ATLANTIC TESTING LABORATORIES, LIMITED</b> <b>Syracuse, New York</b>	<b>Remarks:</b> Delivered by the client on 4-21-15 Dry Preparation  <b>Rammer:</b> Mechanical <b>Specific Gravity:</b> Assumed

Reviewed by: Jim

Date: 4/27/15